

BE ONE OF A FEW PROUD HOTEL OWNERS

Every unit provides uninterrupted views of the mountains and the rainforest out your doorstep. Breathe the fresh air and let the earth be your remedy. Rest yourself in between the tranquil mountains and wake up to the sound of the forest. The project presents a lucrative investment opportunity in the property sector, with 215 units are available for ownership. A true blend of beauty and value.

- Potential income Rp 321.500.000,-*
- Increasing value of property
- 30 voucher free stay

HIGH RETURN OF INVESTMENT



FIVE STAR FACILITIES



215 Rooms • Rooftop Bar & Lounge
9 Meeting Rooms • Wedding Venue
Banquet Hall • Kids Playground
BBQ Area • Infinity Swimming Pool
Hot Water Pool • Gym • Spa
Outbond Area

QUICK RETURN OF INVESTMENT

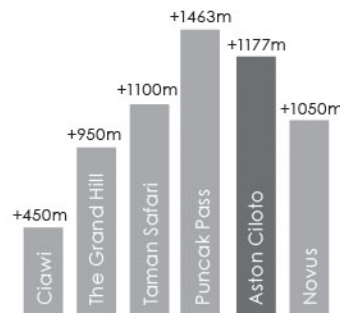
Soft opening hotel by
END OF 2021 will
give a quick return
on investment

LIMITED UNIT FOR MAXIMIZE RETURN

215
units only

Limited number of units will guarantee
a maximum Return On Investment (ROI)

ALTITUDE AT +1.177m



INT'L STANDARD OPERATOR

Managed by:
ARCHIPELAGO
INTERNATIONAL
HOTELS, RESORTS & RESIDENCES

- Certified
- 10 Multi-Award Winning Brands
- 200+ Properties
- 120 Million Guests by 2020



VISIT OUR MARKETING GALLERY

Open House
Everyday
10AM - 7PM

Food & Beverage by:
SAMA DENGAN
coffee & kitchen



Scan here

ARCHIPELAGO
INTERNATIONAL
HOTELS, RESORTS & RESIDENCES

PT INDRAGA MEGAH MAKMUR

ABODAY

BNI

Bank
BTN

Bank
Sampoerna

Marketing Office
Jl. Kebayoran Lama No.18
Jakarta Barat, 11560
☎ 021 725 6233

Site & Marketing Gallery
Jl. Raya Puncak Ciloto No. 54
Desa Ciloto, Kec. Cipanas
Kab. Cianjur, Jawa Barat

www.aston-ciloto.com

f astonciloto a astonciloto ▶ ASTON Ciloto

DISCLAIMER: The Condominium apartments/units are not owned, developed, or sold by P.T. Archipelago International Indonesia. The developer uses the 'ASTON brand' trade mark under license from P.T. Archipelago International Indonesia.
All information, specifications and plans contained here may be subject to changes by us and/or competent authorities as may be required and do not necessarily represent built standard specifications.
Floor areas are approximate measurements and are subject to final survey, likewise models shown here are artistic impression only should not be considered as representation of fact.

ASTON CILOTO PUNCAK HOTEL & RESORT

BE ONE OF A FEW PROUD HOTEL OWNERS

INT'L STANDARD HOTEL OPERATOR

Managed by: **ARCHIPELAGO**
INTERNATIONAL
HOTELS, RESORTS & RESIDENCES

AWARD WINNING ARCHITECT

ABODAY

GREAT INVESTMENT

Rental Guarantee
Rp. 321.500.000,-*

CLEAN & FRESH AIR

Elevasi +1.177m DPL
Average Temp. : 16 - 22°C

5 STAR FACILITIES

215 Rooms • Rooftop Bar & Lounge
9 Meeting Rooms • Wedding Venue
Banquet Hall • Kids Playground
BBQ Area • Infinity Swimming Pool
Hot Water Pool • Gym • Spa
Outbond Area

LOCATION

1.5 Hours from Jakarta
5 Minutes from Puncak Pass

SOFT OPENING
End of 2021



STRATA TITLE
NO. IMB: 503/4217/DPMPSTP/2017

Indulge In The Luxury Of Nature

REAL VIEW FROM SITE

DAILY TEMPERATURE
16 - 22°C

Welcome To A Heavenly Escape



FIVE
STAR HOTEL
FACILITIES

Front View



SITE MAP
Total Land Area 1.2 Ha

1. Lobby

2. Lounge

3. Restaurant

4. Gym

5. Spa & Sauna

6. Children Playground
7. BBQ Area

8. Outbond Area

9. Children Pool

10. Infinity Pool

11. Hot Water Pool

12. Ballroom
13. Meeting Rooms

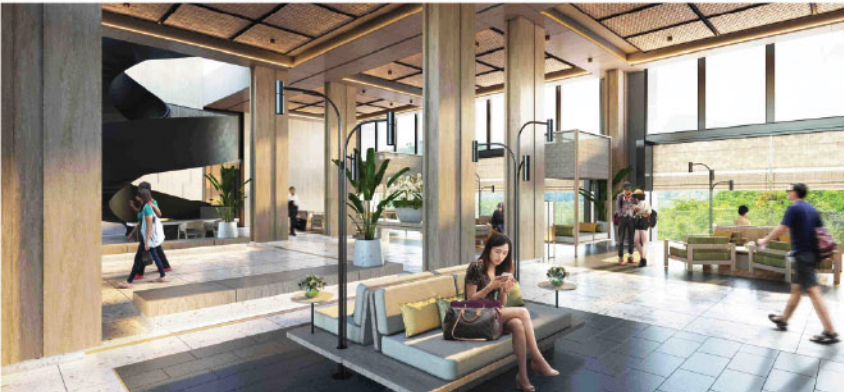
14. Wedding Venue

15. Villas

16. Rooftop Bar & Lounge



Project on Progress - Agustus 2021



Lobby & Lounge 1 2



Restaurant 3



Children Pool, Infinity Pool & Hot Water Pool 9 10 11



Ballroom 12



Meeting Room 13



Wedding Venue 14

INDULGE IN THE LUXURY OF NATURE

As refreshing breeze takes you in, prepare yourself for a meaningful encounter with mother nature. Aston Ciloto Puncak is a hotel and resort that offers 4-star hospitality by Aston International with world-class standard infrastructure and facilities. This is the perfect place for life's greatest event. Celebrate in the midst of lush, highland rain forest, create your moment and let it be worth to remember.



DELUXE A

Mountain / Pool View



DELUXE B

Thematic Garden View

DELUXE • SGA 39.9m²

SPECIFICATION	BEDROOM	BATHROOM	BALCONY
FLOOR	Laminated wood floor/parquet	Homogeneous tile - Niro Granite: 600x600mm	Homogeneous tile: 300x600mm
WALL	HPL ex wildon art Brickwall in rough plaster	Homogeneous tile - Niro Granite: 600x600mm	Homogeneous tile: 300x600mm
CEILING	Gypsum board - 9mm	Water resistance gypsum board - 9mm	
SANITARY		TOTO/setara	